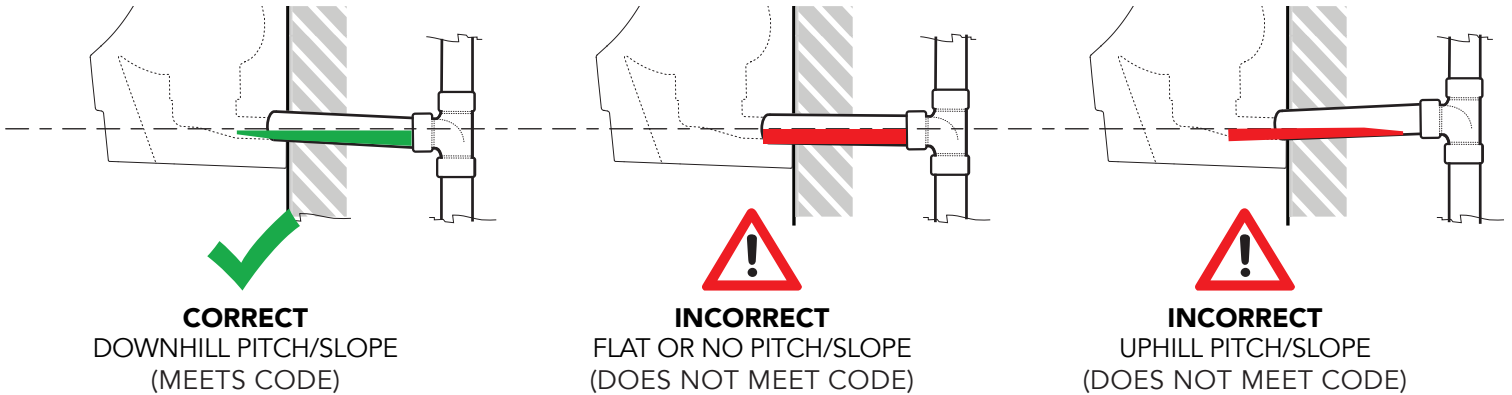


## PRODUCT INSTALLATION

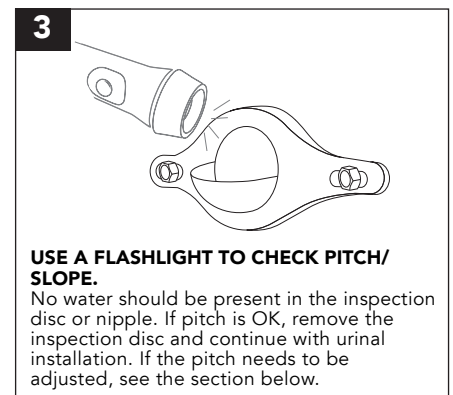
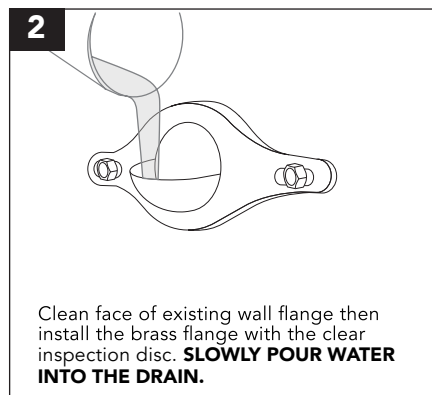
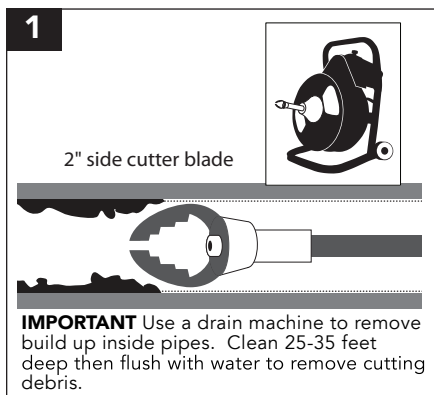
### CHECKING AND ADJUSTING PITCH/SLOPE IN PIPE NIPPLE AND HORIZONTAL DRAIN LINES

#### CODE REQUIREMENTS

2" pipe requires a minimum fall (slope) of 1/4" per foot (2% grade)

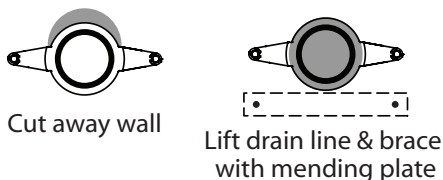


#### CHECKING DRAIN LINE PITCH/SLOPE



#### ADJUSTING PITCH/SLOPE FOR HORIZONTAL (H1) HOUSING HORIZON

1. If necessary, cut out a small area of the wall above nipple.
2. Raise the nipple enough to achieve proper pitch, then brace with a mending plate\*.
3. Re-check for pitch/slope using clear inspection disk to verify if the adjustment is sufficient.
4. Use a building code approved caulking to seal around the drain nipple.



\*Mending plates are a common solution for bracing drain lines.  
You should use whatever method provides the best and most stable results for your application.

